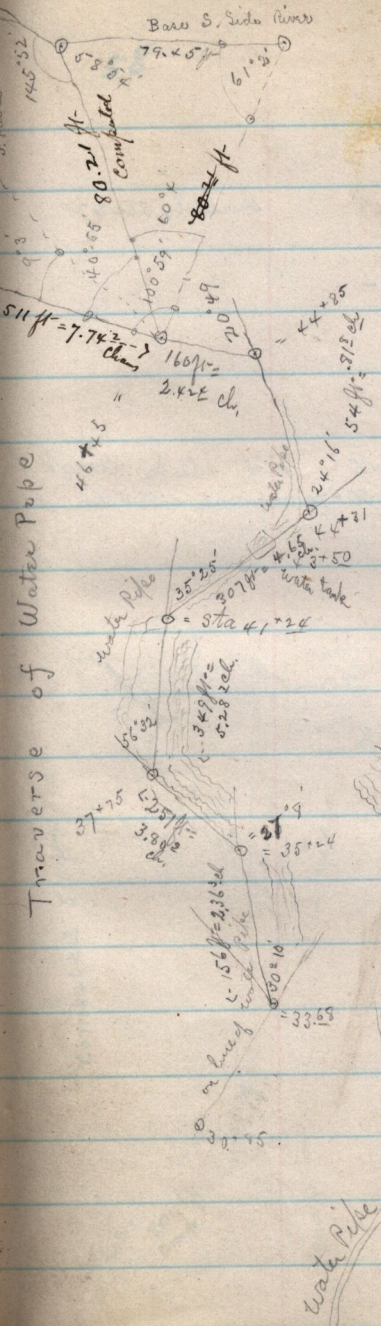


Baro S. Side River

Traverse of Water Pipe



⊙ + 68 = head of city water pipe
 45 long same numbers as
 described by side traverse
 = 46 x 45

⊙ + 43' = Sta 41 x 24 by way
 40 water pipe or side traverse

39 + 99.2

∠ 1 + 24 to 44 + 01
 582° E. mag.

= Point 3' from bank of River
 Calculate distance
 from here (33+68) to
 Sta 40+32 being
 Sta 41+24 by side
 traverse. (Dist =
 (675.2 ft.)
 636 - 10
 4 - 22
 25 - x 8

Water Pipe

RIVER